



About SpRingLatch

Push, seal, secure. Closing of pails made simple.

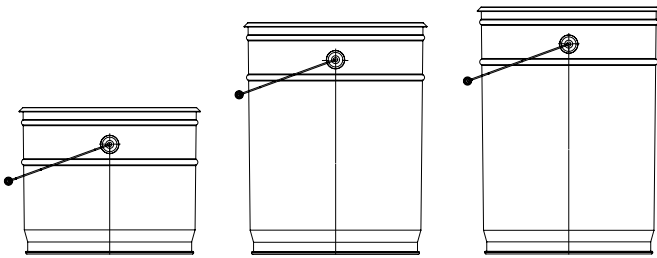
A user-friendly design enabling streamlined operations whilst prioritizing safety at every step

What is SpRingLatch?

An innovative automatic pail closing solution, featuring a simple pusher plate and a ring latch with a built-in spring. It replaces the need for manual closing, ensuring your pails are securely sealed with ease and efficiency.

SpRingLatch products

Ø286 pails from 10L-22L



10L
H-240/244mm

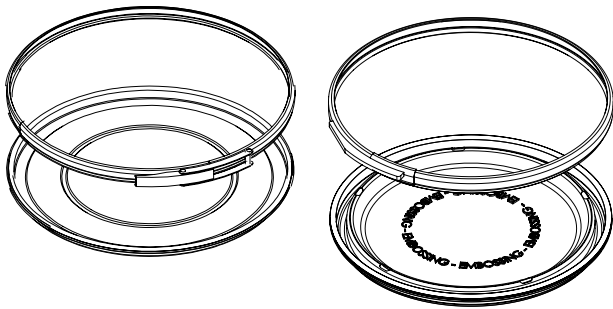
20L
H-380 mm

22L
H-404 mm

SpRingLatch lids Ø286

Non-UN

UN/Y1.4



- External clear or white lacquered
- Internal plain or lacquered

Productivity

The SpRingLatch system ensures closing speeds of up to 720 pails per hour, making it the fastest system on the market.

Costs

The SpRingLatch closing lines save cost on the production line because less manual labour is required, efficiency is increased, and maintenance costs go down.

Safety

SpRingLatch closing lines improve safety by reducing the need for manual labour in a potentially hazardous environment.

Installation

SpRingLatch can be used in filling lines with an air cylinder present by simply mounting on a pusher plate. Alternatively, a simple or automated closing line can be installed..



Installation Requirements

- Air cylinder with a diameter of 125 mm
- Air pressure of 4.5 bar
- Accurate positioning of pails underneath the pusher plate
- Clamp needs to be positioned on the same side as the 7 springs in the pusher plate
- Firm and stable base
- Air tubes have to be wide enough to ensure sufficient air flow capacity
- UN and non-UN require different pusher plates, which can easily be interchanged

UN/Y1.4



Non-UN

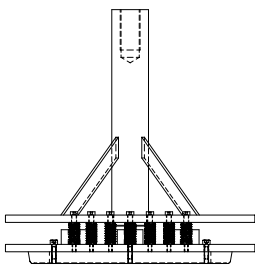


The UN/Y1.4 lever includes a locking mechanism

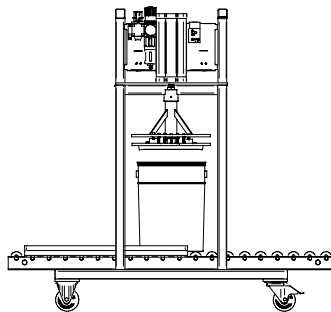
Equipment Recommendations

With a compatible air cylinder, only a connector onto the pusher plate is needed. A connector can be provided by the supplier of the filling line in the form of a screw thread or an easy fix connector in case quick changes between UN and non-UN pusher plates are required.

Pusher Plate



Simple closing line



Automated closing line

